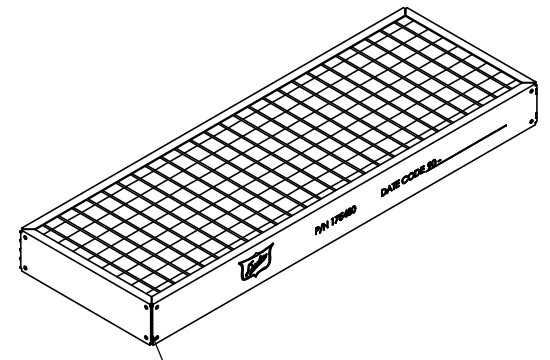
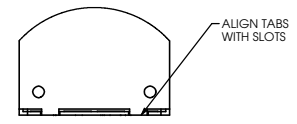


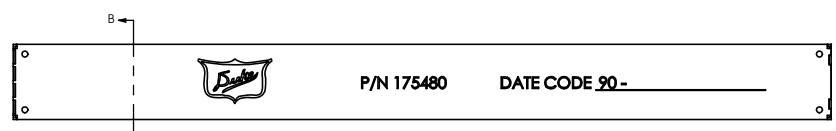
REV.	ECO#	REV BY	DATE	DESCRIPTION
A	06256	-	10/31/06	FIRST RELEASE TO PRODUCTION
B	07319	DL	7/3/07	1.0' SQ MESH WAS .50" SQ - UPDATED NOTES
C	07465	DL	10/12/07	ADDED (4) DIGIT SERIAL SEQUENCE # (DRAWING CORRECTION CELL DENSITY) NOMINAL CELL DENSITY 29 CELLS/IN2 WAS 45 CELLS/INS - CORRUGATION HEIGHT .120+/- .004 WAS .100+/- .015 - NOMINAL UNIT WEIGHT 8.0 POUNDS WAS 8.3 - ADDED NOTE : CATALYST FOIL PLATE DIRECTION - REMOVED WELD,GRIND AND POLISH NOTE.
D	09181	JHH	4/3/09	ADDED RoHS NOTE TO SHEET 1; REVISED SHIPPING LABEL INFORMATION TO REMOVE VENDOR NAME, CHANGE DIM 2.375 WAS 2.419, REVISION D WAS B, REVISE QTY OF BOXES, REVISE LOT ID NUMBER WAS 12323/1, ADD RoHS NOTE TO LABEL.
E	10233	JW	5/6/2010	ADDED DRAIN HOLES TO 175481 FRAME



WELD & GRIND CORNERS
NO BURRS OR SHARP EDGES PERMITTED
TYP(4) CORNERS

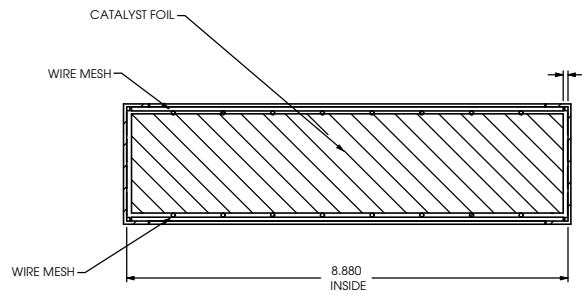


DETAIL A
SCALE 1:2



DATE CODE : YEAR/MONTH/DAY ENGRAVED BY MFR.
A=1;B=2 ;C=3;D=4;E=5;F=6;G=7;H=8;I=9;J=0
EXAMPLE DATE CODE
DATE CODE 90 - JFJIBF - XXXX (2006,SEPT. 26)

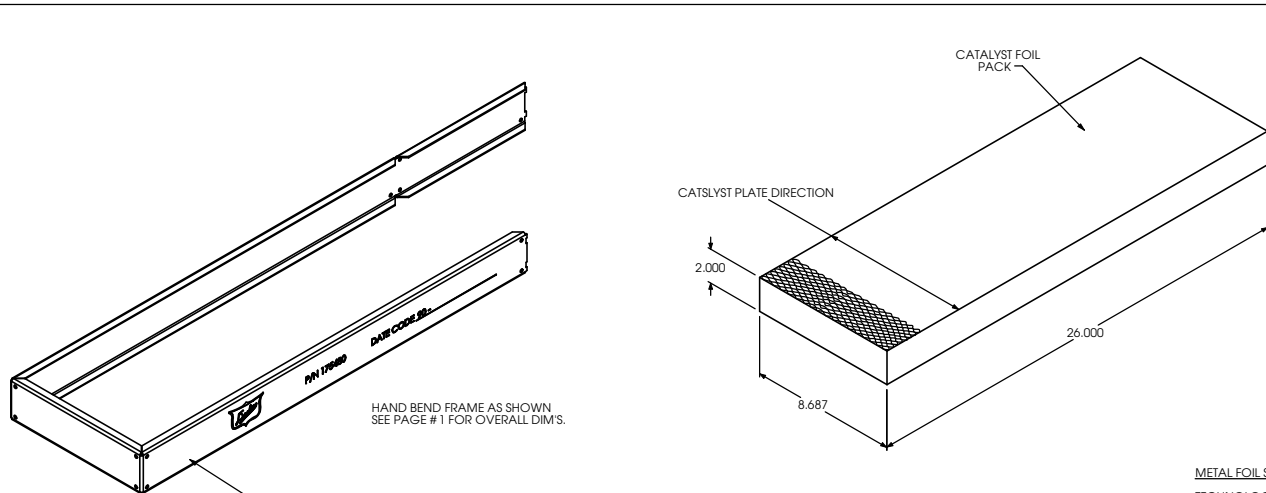
SERIAL SEQUENCE #



SECTION B-B
SCALE 1:2.5

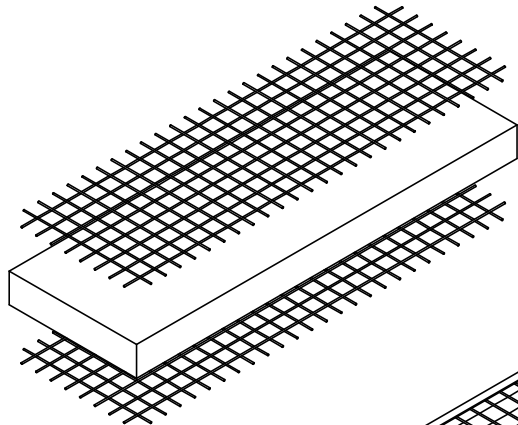
NOTE:
1. MUST BE COMPLIANT WITH **WEEE** (2002/96/EC) **RoHS** (2002/95/EC) AND INTERNATIONAL DEVIATIONS.

ALL THE FOLLOWING APPLY UNLESS OTHERWISE NOTED: ALL DIMENSIONS ARE OUTSIDE ALL ANGLES 90°		DUKE MANUFACTURING CO. 2305 N. BROADWAY ST. LOUIS MO. 63102 "YOUR SOLUTIONS PARTNER"	
TOLERANCES:			
LINEAR	+/- .032"	DML	10/31/06
ANGLES	+/- 1°	MATERIAL	FINISH
HOLE Ø	+/- .002"	SEE NOTES	
THE INFORMATION CONTAINED IN THIS DRAWING IS THE SOLE PROPERTY OF DUKE MFG. CO. ANY REPRODUCTION IN PART OR WHOLE WITHOUT WRITTEN PERMISSION IS PROHIBITED.		CHECKED BY	PART FILE
		GKS	CatalyticCatalyst
SHEET 1 OF 2		SCALE	DWG / PART NO.
		SCALE 1:4	175480



HAND BEND FRAME AS SHOWN
SEE PAGE # 1 FOR OVERALL DIM'S.

FRAME PROVIDED
BY DUKE MFG.
REF. P/N 175481
(NOT FORMED AT CORNERS)



METAL FOIL SPECIFICATIONS

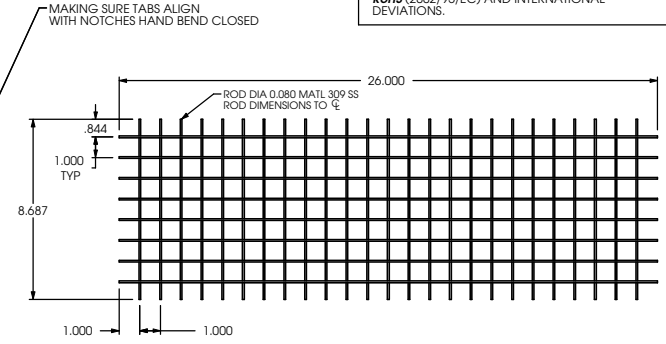
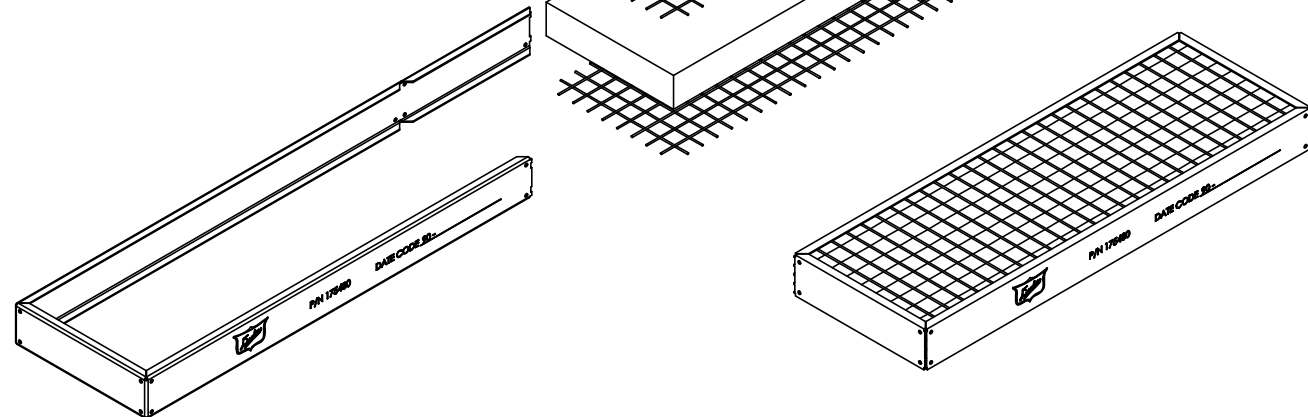
TECHNOLOGY CLASS
FORM
NOMINAL CELL DENSITY
CELL PATTERN
SUBSTRATE METAL
FOIL THICKNESS
FOIL HEIGHT
FOIL BUNDLE FOLD CHORD LENGTH
CORRUGATION HEIGHT
TOTAL NUMBER OF PLATES
FACE SCREEN ALLOY
MESH COUNT (BOTH SIDES OF CATALYST)
WIRE SIZE
NOMINAL UNIT WEIGHT

CHARBROILER OXIDATION
METAL FOIL MONOLITH
29 CELLS/IN²
13 DEGREE SKEW
IRON/CHROME/ALUMINUM/SS ALLOY
.002"
2.00"
8.90"
.120 +/- .004
210 - 225
309 SS
1 X 1 PER INCH (1.0" WIRE PITCH)
.080" DIAMETER
8.0 POUNDS

PACKAGING REQUIREMENTS:

EACH CATALYST TO BE
INDIVIDUALLY - BOXED IN
SINGLE - WALLED CORRUGATED
CARTON AND IDENTIFIED
WITH THE FOLLOWING SHIPPING
LABEL INFORMATION

PART NUMBER	1005142
DESCRIPTION	METAL FOIL CATALYST 26.33" X 9" X 2.375"
CLIENT	DUKE MANUFACTURING ST. LOUIS MO.
CLIENT PART NUMBER	175480 REVISION D
PURCHASE ORDER:	XXXXXXXX
QUANTITY:	1 PIECE
LOT ID	WO-XXXXX/X
DATE OF MANUFACTURE	DD/MM/YY
MUST BE COMPLIANT WITH WEEE (2002/96/EC) RoHS (2002/95/EC) AND INTERNATIONAL DEVIATIONS.	



ALL THE FOLLOWING APPLY
UNLESS OTHERWISE NOTED:
ALL DIMENSIONS ARE OUTSIDE
ALL ANGLES 90°

TOLERANCES:
LINEAR +/- .032"
ANGLES +/- 1°
HOLE Ø +/- .002"

DUKE MANUFACTURING CO.
2305 N. BROADWAY ST. LOUIS MO. 63102
"YOUR SOLUTIONS PARTNER"

DRAWING BY DML	DATE 10/31/06	CATALYST ELEMENT - METAL FOIL	
MATERIAL	FINISH	FBB	
SEE NOTES		PART FILE	CatalyticCatalyst
CHECKED BY GKS	DWG / PART NO.		
SHEET 2 OF 2	SCALE 1:6		

THE INFORMATION CONTAINED IN THIS
DRAWING IS THE SOLE PROPERTY OF
DUKE MFG. CO. ANY REPRODUCTION
IN PART OR WHOLE WITHOUT WRITTEN
PERMISSION IS PROHIBITED.

175480

REV.	ECO#	REV BY	DATE	DESCRIPTION
A	06256	-	10/31/06	FIRST RELEASE TO PRODUCTION
B	07319	DL	7/3/07	1.0' SQ MESH WAS .50' SQ - UPDATED NOTES
C	07465	DL	10/12/07	ADDED (4) DIGIT SERIAL SEQUENCE # - (DRAWING CORRECTION CELL DENSITY) NOMINAL CELL DENSITY 29 CELLS/IN ² WAS 45 CELLS/IN ² - CORRUGATION HEIGHT .120 +/- .004 WAS .100 +/- .015 - NOMINAL UNIT WEIGHT 8.0 POUNDS WAS 8.3 - ADDED NOTE : CATALYST FOIL PLATE DIRECTION - REMOVED WELD.GRIND AND POLISH NOTE.
D	09181	JHH	4/3/09	ADDED ROHS NOTE TO SHEET 1; REVISED SHIPPING LABEL INFORMATION TO REMOVE VENDOR NAME, CHANGE DIM 2.375 WAS 2.419, REVISION D WAS B, REVISE QTY OF BOXES, REVISE LOT ID NUMBER WAS 12323/1, ADD ROHS NOTE TO LABEL.
E	10233	JW	5/6/2010	ADDED DRAIN HOLES TO 175481 FRAME